

DT SERIES FLOODED BATTERY

DT866 (8V150Ah)



CHARACTERISTICS

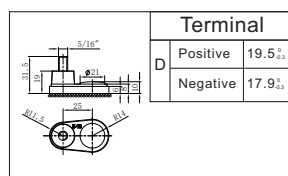
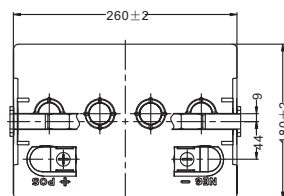
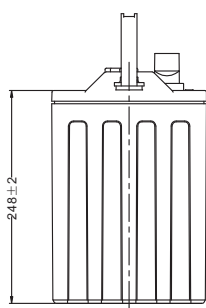
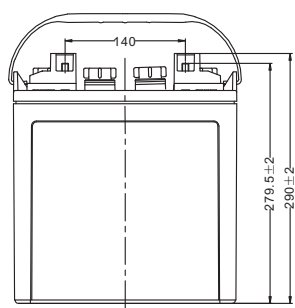
| Item | Specifications | |
|--------------------|------------------|----------------------|
| Voltage | 8V | |
| Dimension | Length | 260mm (10.2inches) |
| | Width | 180mm (7.09inches) |
| | Container Height | 248mm (9.76inches) |
| | Total Height | 279.5mm (11.0inches) |
| Approx Weight | 26.5kg (58.4lbs) | |
| Terminal | DT(5/16") | |
| Container Material | PP | |
| Rated Capacity | 20HR | 150Ah |
| | 5HR | 125Ah |
| Reserve Capacity | 25A | 225min |
| | 56A | 90min |

GENERAL FEATURES

- Long cycle service life, strong recovery ability of deep discharge
- Low risk of thermal runaway, easy maintenance
- High energy, low internal resistance, low self-discharge
- Reliable sealing structure ensures no leakage during use
- Special design and structure increase battery performance
- The special alloy improves the corrosion resistance of the plate increases the service life and good deep discharge performance

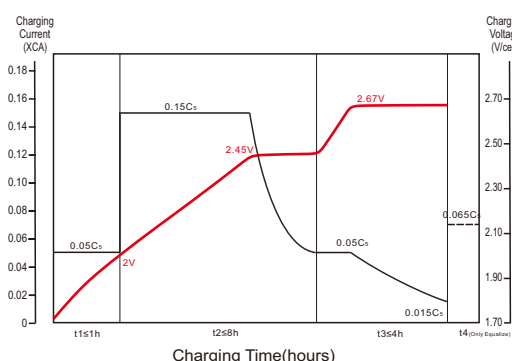
APPLICATIONS

- Electric vehicle
- Golf cart
- Sightseeing bus
- Cleaning equipment
- AWP
- Marine&RV

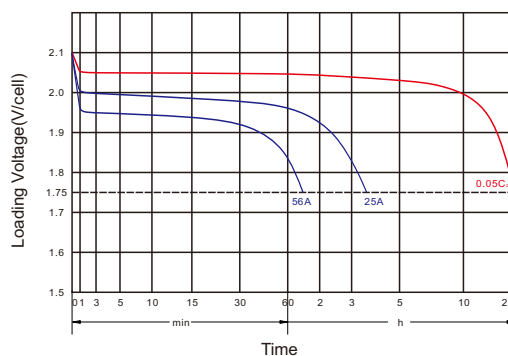


| Terminal | |
|----------|----------------------|
| Positive | 19.5 _{±0.5} |
| Negative | 17.9 _{±0.5} |

Charging Characteristics



Discharge Characteristics



Designed in compliance with applicable BCI standard.
Tested in compliance to BCI standard.

Leoch International Technology Ltd.

www.leoch.com

Leoch Batteries Pte Ltd

www.leoch.sg

Leoch Battery Corporation

www.leoch.us

Leoch Europe S.A.

www.leoch.eu